

# CONVECTION STEAM OVENS

## INSTALLATION GUIDE



Contents

- 2 Convection Steam Ovens
- 2 Specifications
- 4 Installation
- 5 Troubleshooting

Features and specifications are subject to change at any time without notice. Visit [wolfappliance.com/specs](http://wolfappliance.com/specs) for the most up-to-date information.

Important Note

To ensure this product is installed and operated as safely and efficiently as possible, take note of the following types of highlighted information throughout this guide:

**IMPORTANT NOTE** highlights information that is especially important.

**CAUTION** indicates a situation where minor injury or product damage may occur if instructions are not followed.

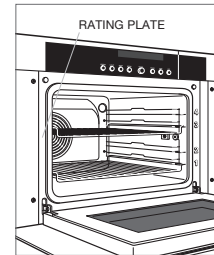
**WARNING** states a hazard that may cause serious injury or death if precautions are not followed.

**IMPORTANT NOTE:** Save these instructions for the local electrical inspector.

Product Information

Important product information including the model and serial number are listed on the product rating plate. The rating plate is located on the left side of the front face frame. The oven door must be open to view the rating plate. Refer to the illustration below.

If service is necessary, contact Wolf factory certified service with the model and serial number.



Rating plate location.

Installation Requirements

The convection steam oven can be installed in a standard or flush inset application. A minimum base support of 45 kg is required. The electrical supply for the oven must be located in an adjacent cabinet.

For standard installations, face trim will overlap stiles and rails. Refer to the chart below for trim overlaps.

For flush inset installations, a minimum 3 mm reveal is required on all four sides. To ensure consistent reveals, each corner of the opening must be exactly 90°. Finish the edges of the opening. They may be visible when the door is open.

If the convection steam oven is installed above or below a Wolf E series oven in a flush inset application, a 6 mm reveal is required.

TRIM OVERLAP	
OVERLAP	762 mm MODEL
Top	5 mm
Bottom	0 mm
Sides	98 mm

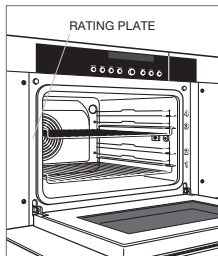
## SPECIFICATIONS

### Electrical

Installation must comply with all applicable electrical codes and be properly grounded (earthed).

The electrical supply for the convection steam oven must be placed in an adjacent cabinet within reach of the 1.8 m power cord. Locate the electrical supply as shown in the illustrations on pages 3–4. A separate circuit, servicing only this appliance is required. A ground fault circuit interrupter (GFCI) is not recommended and may cause interruption of operation.

Performance may be compromised if the electrical supply is less than 220 volts.



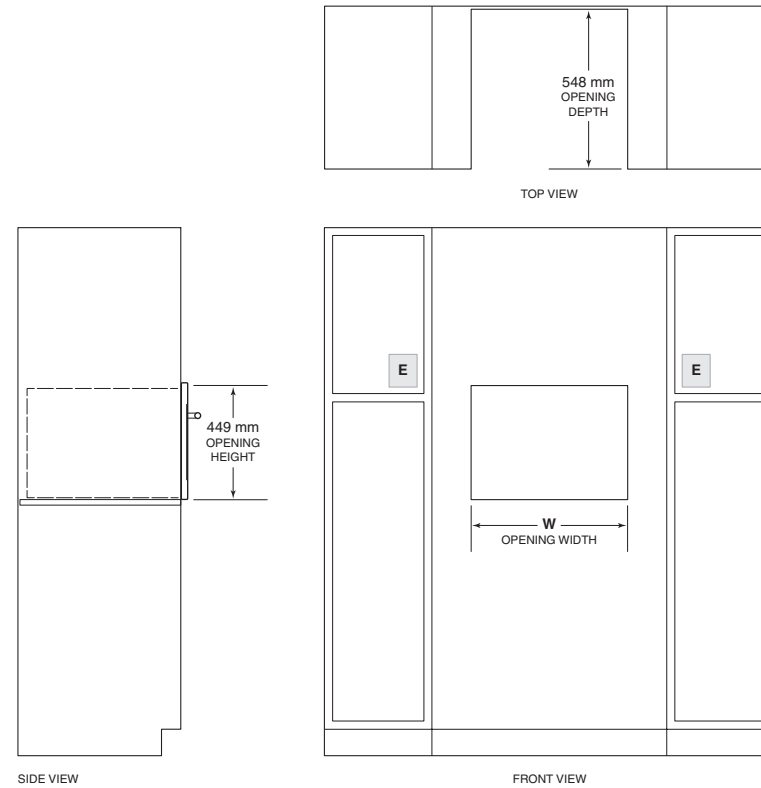
Rating plate location.

ELECTRICAL REQUIREMENTS	
Electrical Supply	220-240 VAC, 50 Hz 380-415 VAC 2N, 50 Hz
Service	3700 Watts
Power Cord	2.5 m

**IMPORTANT NOTE:** Connection of this appliance should be through a fused connection unit or a suitable isolator, which complies with national and local safety regulations. The on/off switch should be easily accessible after the appliance has been installed. If the switch is not accessible after installation (depending on country) an additional means of disconnection must be provided for all poles of the power supply. When switched off there must be an all pole contact gap of 3 mm in the isolator switch. This 3 mm contact disconnect gap must apply to any isolator switch, fuses and/or relays according to EN60335.

### Convection Steam Oven

#### STANDARD INSTALLATION

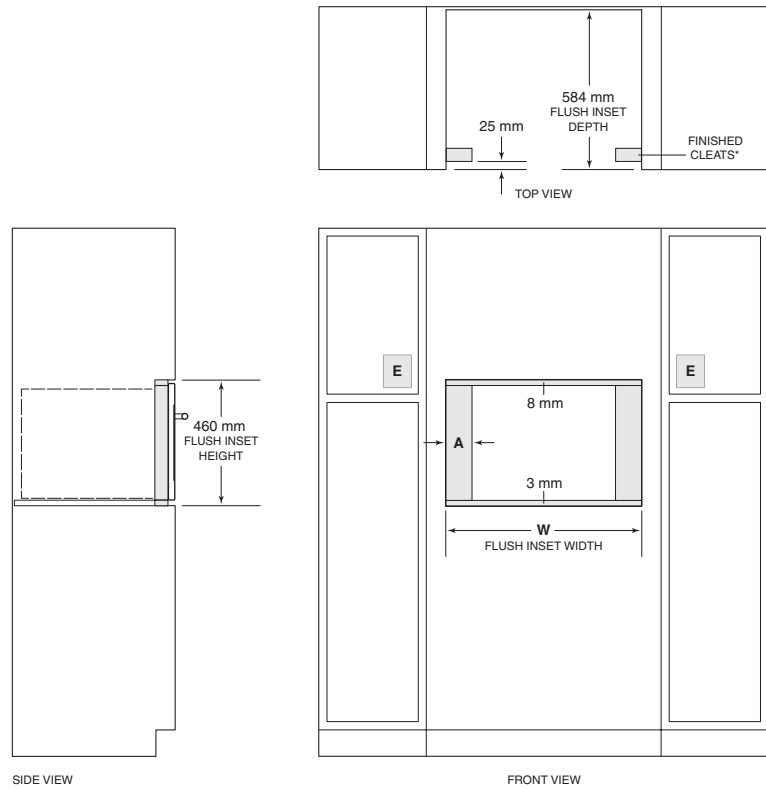


Electrical supply must be located in adjacent cabinet within .9 m of opening.  
Dashed line represents profile of unit.

OPENING WIDTH	
MODEL	W
762 mm Model	562 mm

Convection Steam Oven

FLUSH INSET INSTALLATION



\*Will be visible and should be finished to match cabinetry.

NOTE: Electrical supply must be located in adjacent cabinet within .9 m of opening. Dashed line represents profile of unit.

OPENING WIDTH			
MODEL	W	A	
762 mm Model	765 mm	102 mm	

Preparation

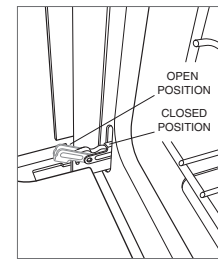
Before moving the oven, protect any finished flooring and secure oven door closed to prevent damage.

Use an appliance dolly to move the unit near the opening. Remove and recycle packing materials. Do not lift or carry the oven by the door handle.

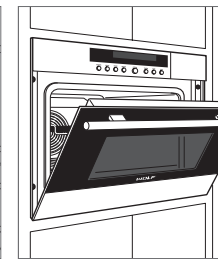
OVEN DOOR REMOVAL

To remove, open oven door completely. Rotate both hinge latches forward to the open position. Close door to the "at-rest" position, then lift up and out. Refer to the illustrations below.

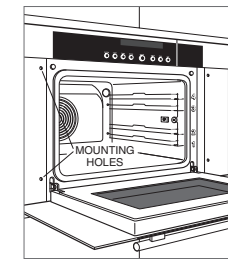
To reinstall, insert door hinges into frame openings. Open oven door completely and rotate both hinge latches back to the closed position.



Oven door hinge latch.



Door "at-rest" position.



Oven installation.

Installation

Place the oven in the opening and slide back partially. Guide the power cord through the opening of the adjacent cabinet and slide oven back fully. Verify the power cord is not trapped between the oven and cabinet wall.

Locate mounting holes on the oven side trim, two on each side. Drill pilot holes. Use the mounting screws provided to secure the oven to cabinetry. Refer to the illustration below.

To avoid interference, a 90° door stop may be required for any appliance or cabinet door installed next to the oven.

**CAUTION**  
Failure to install the mounting screws may cause the oven to tip forward during use.

### Troubleshooting

**IMPORTANT NOTE:** If the convection steam oven does not operate properly, follow these troubleshooting steps:

- Verify electrical power is supplied to the oven.
- Verify proper electrical connections.
- If the oven does not operate properly, contact Wolf factory certified service. Do not attempt to repair the oven. Wolf is not responsible for service required to correct a faulty installation.

824654 REV-B 2/2015

