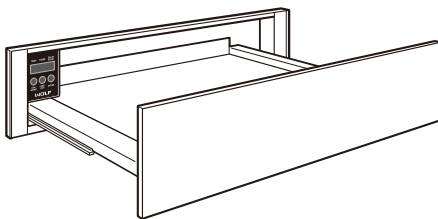


FEATURES

- Preheats cups so hot beverages stay hot longer.
- Standard or flush inset installation.
- Designed to match the Wolf coffee system.
- Hidden electronic touch controls.
- 420-watt heating element with temperature control range of 29°C to 79°C.
- Automatic shut off and delayed start features.
- Push-pull drawer opening.
- Full extension, ball-bearing drawer glides.
- Removable, non-slip drawer liner.



Model ICBCW24/S

MODEL	
Stainless	ICBCW24/S

SPECIFICATIONS

PRODUCT

Dimensions W597mm x H140mm x D533mm
Weight 27 kg

INTERIOR

Capacity 23 L
Interior W432mm x H102mm x D508mm

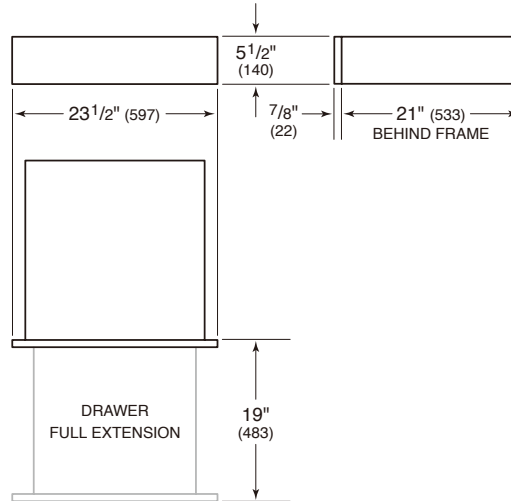
ELECTRICAL

Supply 220-240 VAC, 50/60 Hz
Load 3 amp
Connection 13 amp
Power Cord 0.9 m

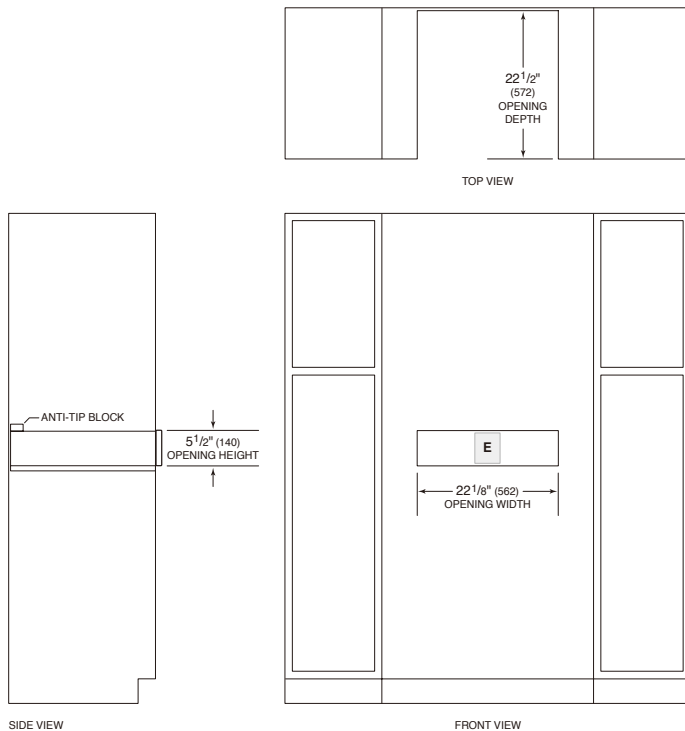
Specifications are subject to change without notice. Visit wolfappliance.com/specs for the most up-to-date information.

Dimensions may vary $\pm 1/8$ " or 3mm. Dimensions in parentheses are millimeters unless otherwise specified.

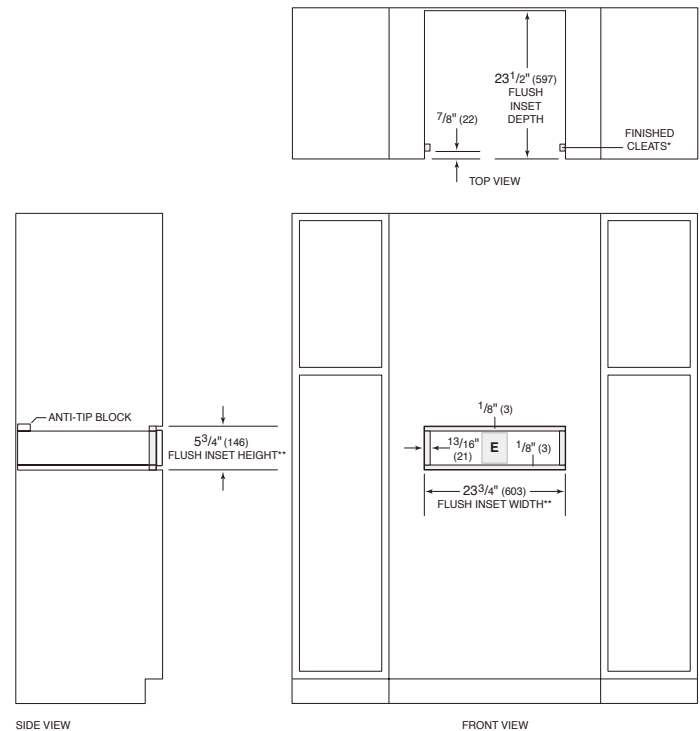
DIMENSIONS



STANDARD INSTALLATION



FLUSH INSET INSTALLATION



*Will be visible and should be finished to match cabinetry.
**Dimension provides minimum reveals.